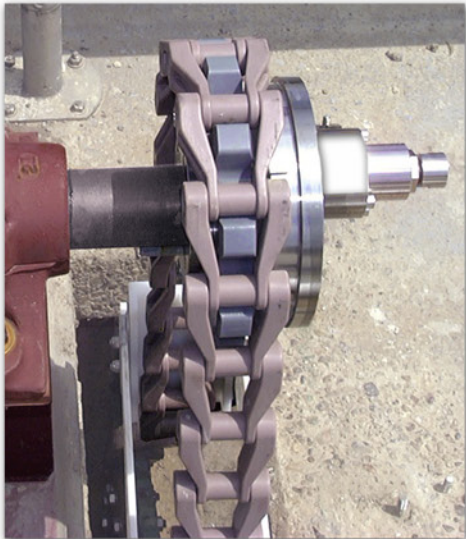
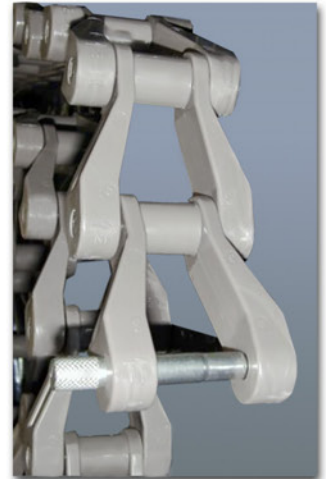
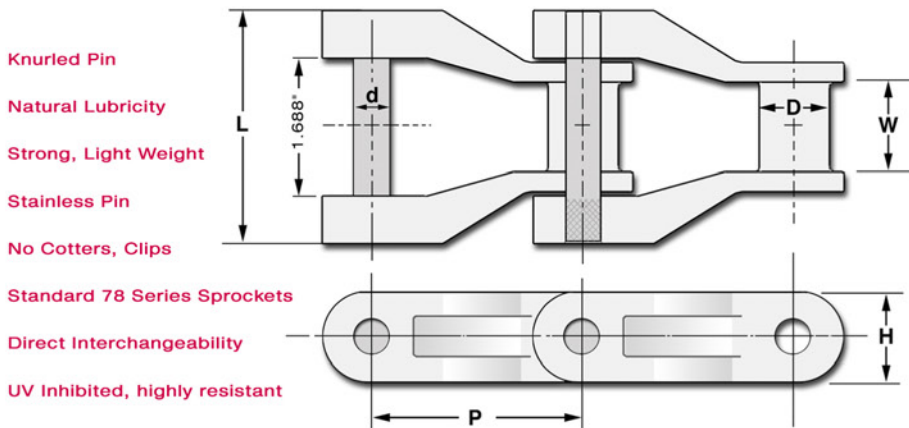


NH 78 Non-Metallic Drive Chain



NH 78 Non-Metallic Chain is a strong, yet light weight alternative to metallic or cast drive chains. Directly interchangeable with 78 series chains, the NH 78 chain can be used with cast, plastic, or stainless steel sprockets for clarifier drives or drag conveyor applications. Featuring a stainless steel knurled pin, the NH 78 easily assembles without the need for cotters, locking pins, or clips. The unfilled Acetal link is highly wear resistant and does not corrode or rust, natural lubricity eliminates the need for oilers or lube lines. Minimal wear means less maintenance. Extremely durable NH 78 chain is an economical alternative to standard drive chains.

NH 78 Non-Metallic Drive Chain



Dimensions and Strength of NH 78

Chain No.	Pitch P (in.)	Working Load (lbs.)	Average Ultimate Strength (lbs.)	Weight (lbs./ft.)	Barrel		Pin			Link	Side Bar
					Outside Dia. D (in.)	Width W (in.)	Outside Dia. d	Length L (in.)	Material		
NH 78	2.609	1,750	4,000	1.41	.875	1.125	.438	2.906	18-8 CrNi Steel	Unfilled Acetal Resin	1.125

Specifications Subject to Change Without Notice



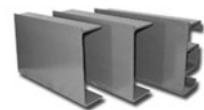
SPROCKETS



NON-METALLIC CHAINS



STAINLESS CHAINS



FIBERGLASS FLIGHTS